



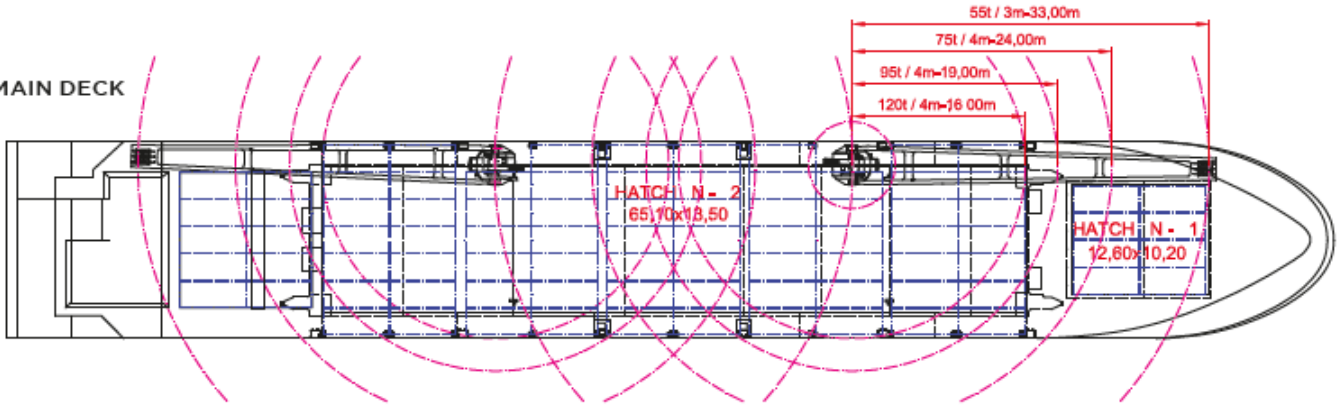
## BREB STAR



SHIPS BASICS			
Name	BREB STAR	IMO	9415325
Built	2010	Flag	Antigua Barbuda
Classification	GL + 100 A5 E3 + MC E3 AUT	Port of Registry	St. Johns
Type	MPP tweendeck heavylifter	Call Sign	V2EZ6
DIMENSIONS AND MAIN DATA			
GT / NT	abt. 6.155 / 2.759	Beam	abt. 18,20 m
dwcc	abt. 6.600 mts	Draft max.	abt. 7,15 m
Length o.a.	abt. 122,45 m	Depth to main deck	abt. 9,70 m
Heigth above keel	41,00 m	Speed	abt. 10 kn on abt. 14,0 mts in ballast
HATCH AND HOLD			
Holds	2		
Hold dimensions	Hold 1: abt. 6,30 m x 10,20 m x 6,42 m + 6,30 m x 5,10 m x 6,42m Hold 2: abt. 65,10 m x 13,50 m x 9,58 m		
Hold capacity	9.058 cbm / 348.268 cbft		
Hatch cover dimensions	Hatch 1: abt. 17,90m x 15,20m x 0,75m Hatch 2: abt. 65,10m x 15,20m x 0,75m		
Hatch cover type	MacGregor folding type		
OTHERS			
Cargo gear	2 NMF 120 mt capacity each / 240 mt combined	Floor space on deck Floor space tweendeck Floor space under deck	1.007,37 sqm 878,85 sqm 975,24 sqm
Crane outreach	up to 16 m: 120 mt up to 19 m: 95 mt up to 24 m: 75 mt up to 33 m: 55 mt	Tween deck Position 1  Tween deck Position 2	Height lower hold 4,70 m Height on tween deck 4,12 m Height lower hold 6,00 m Height on tween deck 2,82m
Container intake	532 TEU nominal 262 TEU at 14mt homogeneously loaded 32 reefer plugs on deck	Features  Deck strengths per sqm	Fitted for carriage of dangerous goods of all IMO classes Heavy cargoes strengthened 18,00 mts on tanktop 2,50 mts on tweendeck 2,80 mts on hatchcovers
TECHNICAL SPECIFICATION			
Main Engine	MaK 6 M32C, 3000 KW	Emergency Generator	130 kW
Aux. Engine	MAN Diesel engine, 390 KW	Bowthruster	280 kW
COMMUNICATION			
Phone	+49 491 798 93 12	E-Mail	charter@eilsum.briese-fleet.com



**MAIN DECK**



**TWEENDECK**

