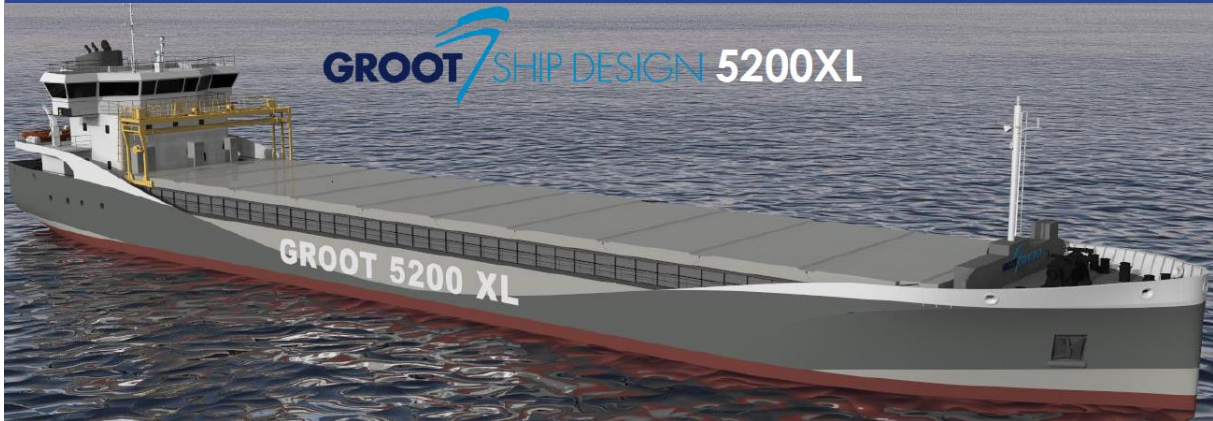




BREB 5200 XL



SHIPS BASICS

Name	BREB 5200 XL	IMO	TBN
Built	2025 / 2026	Flag	TBN
Classification	DNV GL, Ice class 1A	Port of Registry	TBN
Type	MPP Singledecker	Call Sign	TBN

DIMENSIONS AND MAIN DATA

GT / NT	abt. 3.850 / 1.880	Beam	abt. 15,45 m
dwcc summer	abt. 5.200	Length o.a.	abt. 89,98 m
Consumption	at sea 7,6 mts fuel per day in port 0,2 mts per day	Draft max.	6,20 m
		Speed	abt. 12 kn
		Floor space under deck	abt. 790 sqm

HATCH AND HOLD

Holds	1, fully box shaped
Hold dimensions	abt. 61,60 m x 12,85 m x 9,75 m
Hold capacity	7.645 cbm / abt. 270.000 cbf
Bulk heads	2 pcs, 10 positions
Hatch cover type	Pontoon type
Tween decks	yes

OTHERS

IMO classes	Fitted for the carriage of cargoes of all IMO classes	Timber fitted	Yes
-------------	---	---------------	-----

TECHNICAL SPECIFICATION

Main Engine	MAK 6M25 1.850 kW	Bowthruster	300 kWe
-------------	-------------------	-------------	---------



BREB GmbH & Co. KG

BREB GmbH & Co. KG

Tel: +49 4721 590 54 0

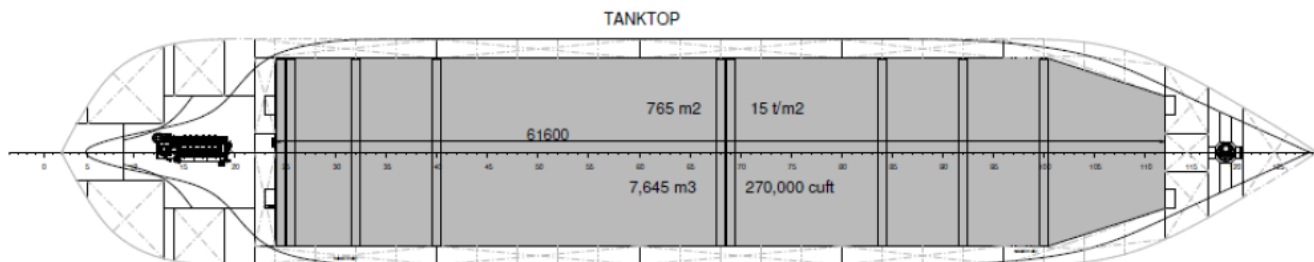
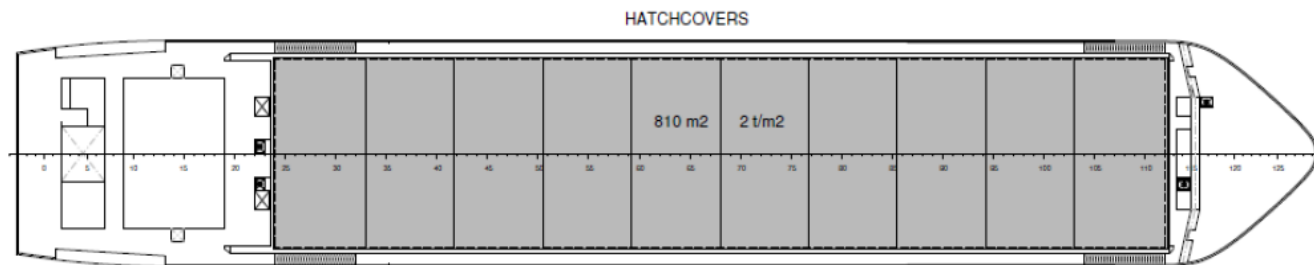
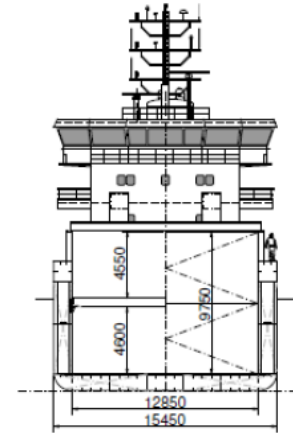
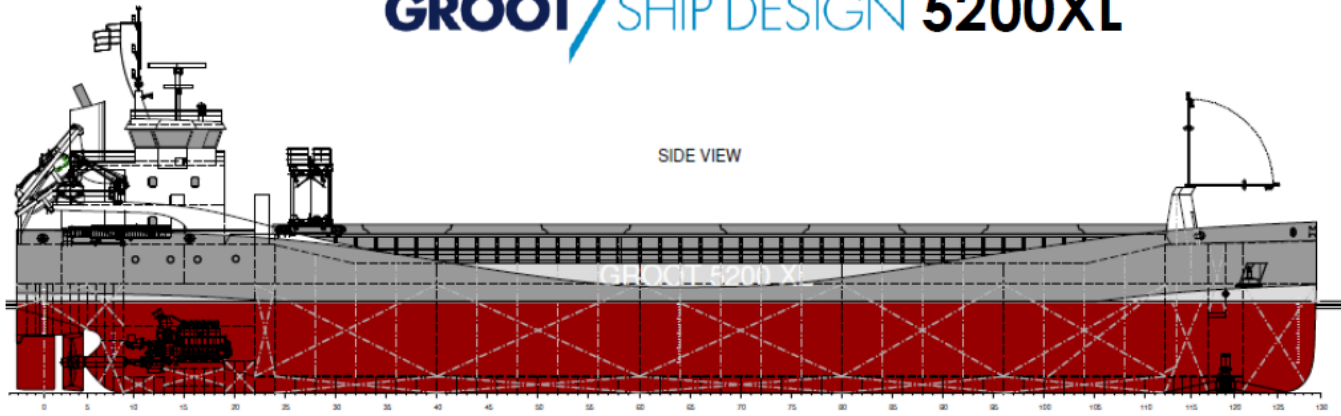
Kapitän-Alexander-Str. 16

chartering@breb.de

D-27472 Cuxhaven

ops@breb.de

GROOT SHIP DESIGN 5200XL



All particulars given in good faith and believed to be correct, but without guarantee.