



ANMARE



SHIPS BASICS

Name	ANMARE	IMO	9434589
Built	2009	Flag	Antigua & Barbuda
Classification	GL	Port of Registry	St. John's
Type	MPP Singledecker	Call Sign	V2EO3

DIMENSIONS AND MAIN DATA

GT / NT	abt. 2.461 / 1.369	Beam	abt. 12,80 m
dwcc summer / winter	abt. 3.600 / 3.500 mt	Length o.a.	abt. 87,90 m
		Draft max.	5,51 m
Consumption	at sea 5,3 mts MGO per day / in port 0,4 mts per day	Speed	abt. 11 kn
		Floor space under deck	560 sqm / 6.028 sqft
Bunker specification:	MGO max. density: 0,86	Floor space on deck	590 sqm / 6.351 sqft

HATCH AND HOLD

Holds	1, fully box shaped
Hold dimensions	abt. 56,90 x 10,50 x 8,13 m
Hold capacity	4.672 cbm / abt. 164.990 cbft
Bulk heads	2 pcs, 10 positions
Hatch cover type	Folding types
Deck strengths per sqm	15,00 mts on tanktop 1,00 mts on deck

OTHERS

Container Capacity	Capacity 20' / 40'	Timber fitted	Yes
	Hold 108 / 36	Grain fitted	Yes
	Deck 48 / 16	IMO classes	Fitted for the carriage of cargoes of all IMO classes
	Total 144 / 64		

TECHNICAL SPECIFICATION

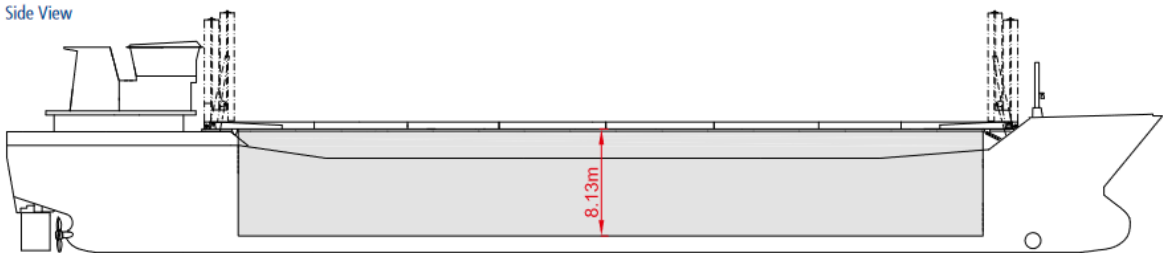
Main Engine	MaK 8m20 1.520 kW	Bowthruster	Yes
Aux. Engine	Sisu 3 x 116 kW		

COMMUNICATION

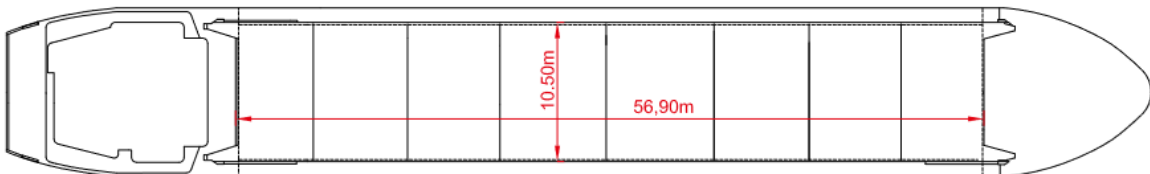
Phone	+31 6 15 45 60 06	E-Mail	charter@kukelborg.briese-fleet.com
-------	-------------------	--------	------------------------------------



Side View



Main Deck



Hold & Double Bottom

